

8 October 2015

Nippon Electric Glass Co., Ltd.
Nippon Sheet Glass Co., Ltd.

Joint development of glass fillers for engineering plastics

Nippon Electric Glass Co., Ltd. (HQ: Otsu-city, Shiga; President: Motoharu Matsumoto, "NEG") and Nippon Sheet Glass Co., Ltd. (HQ: Minato-ku, Tokyo; President: Shigeki Mori, "NSG") have agreed to launch a joint development project of glass fillers, which are used to increase the strength and improve the dimensional stability of engineering plastics.

1. Background

Engineering plastics can acquire new functionalities, such as higher strength and better resistance, with various fillers, generally minute materials. In recent years, the demand for engineering plastics has been on the rise, propelled particularly by the light-weight and multifunctional requirements for automotive, electric and information-technology applications. Two distinct types of glass fillers for engineering plastics have been developed, manufactured and supplied by each of the two companies: chopped strand (bound and cut glass fiber) for reinforcement by NEG; and GLASFLAKE® (scale-like glass flakes) for dimensional stability by NSG. Excellent quality and stable supply of each product have earned the high reputation for the respective company but customers are increasingly expecting even more functionalities for fillers.

2. Objective

NEG and NSG have agreed to develop better surface treatment materials for and shape and formulations of fillers together in order to make the best of each product's advantages (improved strength enabled by chopped strand and better dimensional stability achieved by GLASFLAKE®). We intend to contribute to the furtherance of engineering plastics performance.

3. Estimated time of sample provision

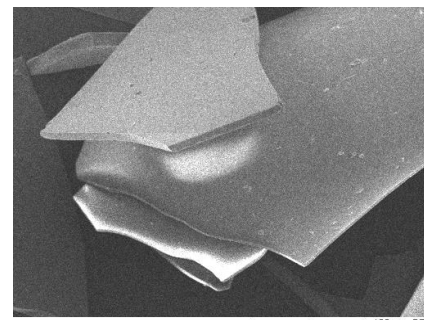
End of March 2016

4. Reference

<Chopped strand made by NEG>



<SEM photo of GLASFLAKE® made by NSG>



(Contact for news release)

Nippon Electric Glass Co., Ltd. PR & IR

Phone: +81-77-537-1702

Nippon Sheet Glass Co., Ltd. Corporate Communications

Phone: +81-3-5443-9477

(Contact for products)

Nippon Electric Glass Co., Ltd. Glass Fiber Division, Sales (Tokyo)

Phone: +81-3-5460-2523

Nippon Sheet Glass Co., Ltd. Glass Flake & Metashine Sales Dept.

Phone: +81-3-5443-9503